

Input voltage	Output voltage	Output current	Output power	Efficiency	Size
30-60V DC	12V DC	20 Amps	240 Watts	96%	74*74*32mm

The RW-934-36-48-12V-240W is a Non-isolated DC-DC converter that uses a synchronous rectification technology, and features high efficiency and power density. It has the dimensions of 74\*74\*32mm(2.91 in. x 2.91 in. x 1.26 in) and provides the rated output voltage of 12V and the maximum output current of 20A.



### Features

- Design meeting RoHS / CE
- High efficiency: 90.8% (@ 24Vin, 25°C)
- Import capacitors, high reliability
- Output transient absorption protection
- Support -40 °C environment
- 100% full load burn-in test
- 3 month warranty
- Remote ON/OFF control (optional)
- Waterproof level IP68

### Applications

- Industrial
- Alternative Energy
- Golf Cart
- Forklift
- Electromotor
- Telecommunications
- Boat & Yacht
- Medical
- LED Marketplaces and so on.

### Model naming method

RW-934-36-48-12V-240W

RW-934: SKU NAME  
 36V Input voltage  
 12V : Output voltage  
 240W: Output Power

## Electrical Specifications

Conditions: TA = 25 °C (77°F), Airflow = 1 m/s (200LFM), Vin =48V, Vout =12V, unless otherwise specified

Parameter	Min.	Typ	Max.	Units	Remarks
Absolute maximum ratings					
Operating ambient temperature	-40	-	+50	°C	
Shell ambient temperature	-40	-	80	°C	
Storage temperature	-55	-	100	°C	
Operating humidity	5	-	95	%	Non-condensing
Atmospheric pressure	62	-	106	Kpa	
Altitude	-	-	4000	m	
Cooling way	-	-	-		Natural cooling

## Input characteristics

Input voltage	30	48	60	V	-
Max. input voltage	-	-	60	V	Continuous
Undervoltage shutdown	26.3	26.5	26.7	V	Automatic recovery
Undervoltage recovery	27.3	27.4	27.5	V	Automatic recovery
Max. input current	-	-	9.7	A	Vin =26.7V; Iout =20A
No load current	-	45	48	mA	Vin =48V

Positive electrode cable	16	-	-	AWG	If the wire length is greater than 50cm, it is recommended to use a thicker wire diameter.
Negative electrode cable	16	-	-	AWG	
Enable PIN cable	/	-	-	AWG	If the product has this feature
Fuse	-	20	-	A	Input positive has built-in fuse

## Output characteristics

Efficiency	-	96	-	%	Vin =48V; Iout =20A
Output voltage	11.9	12.0	12.3	V	Vin =48V; Iout =20A
Regulator accuracy	-	±1	-	%	
Voltage regulation	-	±1	-	%	
Load Regulation	-	±1	-	%	
Overvoltage protection	-	NA	-	V	@25°C, TVS clamp protection
Output current	0	-	20	A	
Overcurrent protection	25.1	25.3	25.5	A	Vin=48V
External capacitance	0	3000	4000	μF	
Output ripple and noise	-	48	60	mVp-p	Vin =30-60V; Iout=20A, Oscilloscope bandwidth: 20 MHz
Output voltage rise time	-	73	78	mS	
Boot delay time	-	108	115	mS	
Out voltage overshoot	-	1	2	%	Vin =48V, 50%-75% Load step
Over temperature protection	-	-	100	°C	Shell temperature, @ 100°C Restore working
Short circuit protection	-	-	-		Boost Converter Output can't shorted
Positive electrode cable	14	-	-	AWG	If the wire length is greater than 50cm, it is recommended to use a thicker wire diameter.
Negative electrode cable	14	-	-	AWG	

## Feature Description

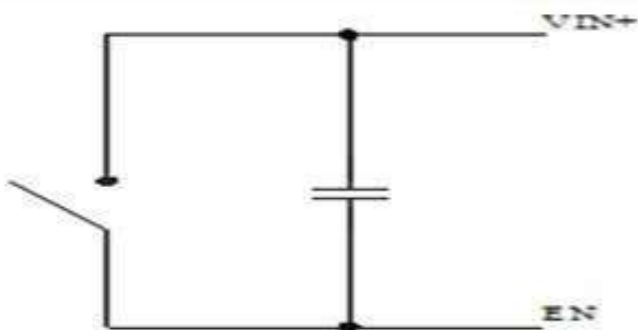
### Remote On/Off (EN) (Optional)

Logic Enable	Low level (0 - 18Vdc)	High level (18-36Vdc)	Left open
Positive logic	Off	On	Off

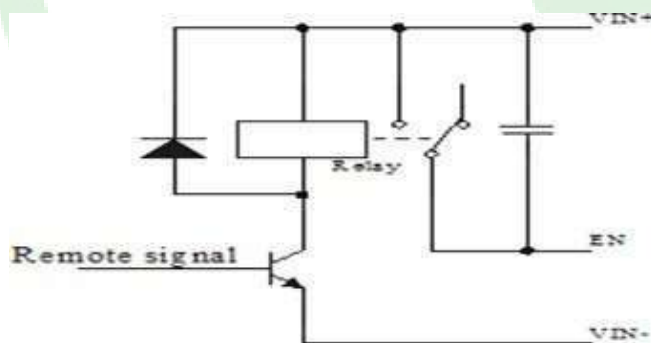
### Input Undervoltage Protection

The converter will shut down after the input voltage drops below the under-voltage protection threshold for shutdown. The converter will start to work again after the input voltage reaches the input under voltage protection threshold for startup. For the Hysteresis, see

### Various circuits for driving the EN



Simple control



Transistor control

### Output Overcurrent Protection

The converter equipped with current limiting circuitry can provide protection from an output overload or short circuit condition. If the output current exceeds the output overcurrent protection set point, the converter enters hiccup mode. When the fault condition is removed, the converter will automatically restart.

### Wiring Instructions

The input and output of this product is terminals. The user should ensure that the input and output wires and terminals are connected reliably, and pay attention to the wire diameter to meet the requirements of the power supply current. If the cable to be used is long, it needs considering the voltage drop of the wire, if the voltage drop is too large, the voltage output at the load end may not meet the load demand. In this case, consider using a thicker wire diameter or reducing the length of the wire. Generally, if long wiring is required, long line should be used on the side where the current is relatively small. For example, this product is a step-down product, so long lines should be used on the input side.

## DIAGRAM WIRING

INPUT+ TO BATTERY+

INPUT- TO BATTERY-

OUTPUT+ TO LOAD+

OUTPUT- TO LOAD-

**Notes: Never reverse the input polarity, or it burns the converter.**

## REVISION HISTORY

rev.	description	date
1.0	initial release	April 2022
2.0	revision	Nov 2024

## Typical Waveforms

Conditions: TA = 25°C (77°F), Vin = 48V, unless otherwise specified.

Figure 4, 25% - 50% load dynamic

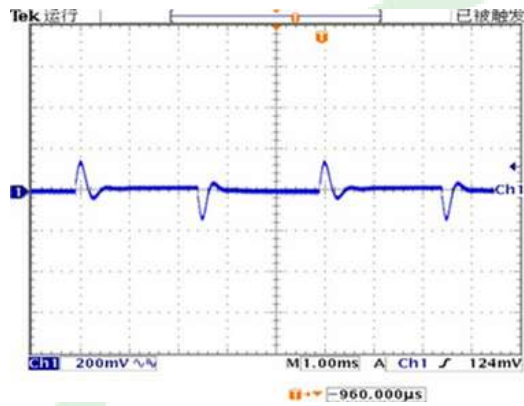


Figure 5, 50% - 75% load dynamic

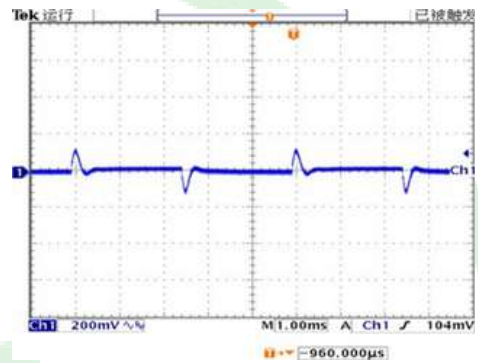


Figure 6, Output voltage established (Iout = 20A)

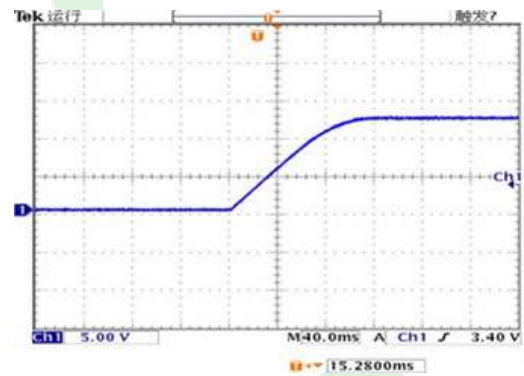
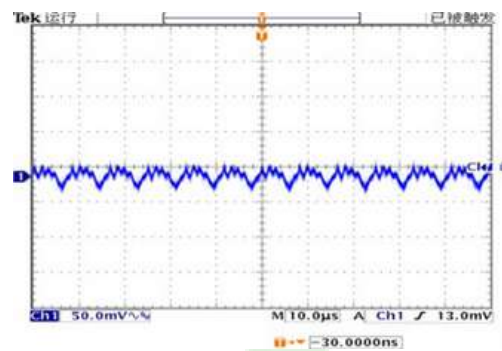


Figure 7, Output ripple & noise (Iout = 20A)



## Safety and EMC features

Anti-electric Strength	Input to Output		V	Leakage current $\leq$ 3.5mA, 1min, no breakdown, no arcing
	Input to Shell	$\geq$ 500	V	
	Output to Shell	$\geq$ 500	V	
Insulation resistance	Input to Output	$\geq$ 50	$M\Omega$	Test voltage = 500V
	Input to Shell			
	Output to Shell			

## Other characteristics

Weight	$\leq$ 290	g	
Package	White box		
MTBF	$\geq$ 200,000	H	$V_{in} = 48V$ ; $I_{out} = 20A$
Switching frequency	$100 \pm 10$	KHz	

## Characteristic Curves

Conditions:  $T_A = 25^\circ C$  (77°F),  $V_{in} = 48V$ ,  $V_{out} = 12V$ , unless otherwise specified.

Figure 1, Efficiency

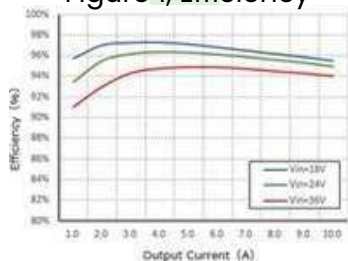


Figure 3, Input V-I,  $I_{out}=20A$

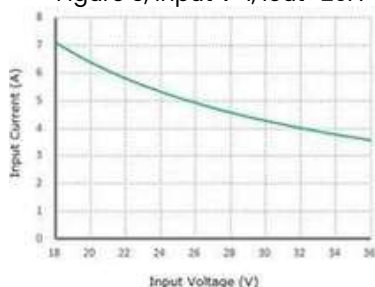
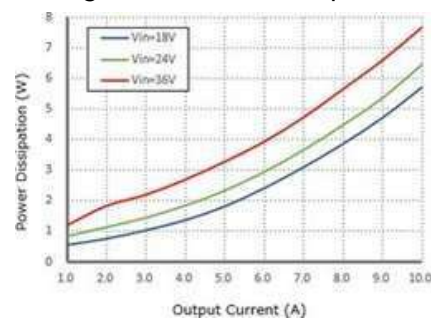


Figure 2, Power dissipation





## SAFETY AND COMPLIANCE

Parameter	Test conditions or description			
safety approvals	EN 61000-6-3:2007/A1:2011/AC:2012 EN 55014-1:2006/A2:2011 EN 60950-1:2006/AC:2011			
enclosures	IP68			

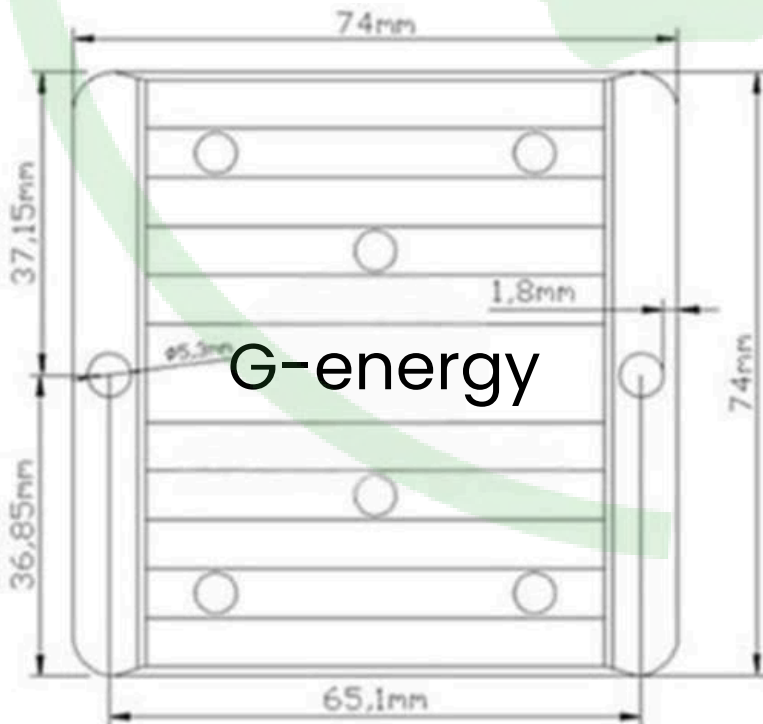
## ENVIRONMENTAL

Parameter	Test conditions or description	Min	Typ	Max	Units
case operating temperature		40	25	85	°C
ambient temperature		-20		85	°C
storage temperature		40		95	°C
humidity				95	%

**Thermal Consideration**

Sufficient airflow should be provided to help ensure reliable operating of the RW-934-36-48-12V-240W. Therefore, thermal components are mounted on the top surface of the RW-934-36-48-12V-240W

to dissipate heat to the surrounding environment by conduction, convection, and radiation. Proper airflow can be verified by measuring the temperature at the middle of the base plate.



**NEWTECH ENTERPRISES Ltd reserves the ©copyright and right of final interpretation.**