

Input voltage	Output voltage	Output current	Output power	Efficiency	Size
51-75V DC	12V	10 Amps	120 Watts	94%	74*74*32mm

The RW-997-60-12V-120W is a Non-isolated DC-DC converter that uses a synchronous rectification technology, and features high efficiency and power density. It has the dimensions of 74\*74\*32mm (2.52 in. x 2.24 in. x 0.87 in in) and provides the rated output voltage of 12 V and the maximum output current of 10A.



### Features

- Design meeting RoHS / CE
- High efficiency: 91.8% (@ 24Vin, 25 °C)
- Import capacitors, high reliability
- Output transient absorption protection
- Support -40 °C environment
- 100% full load burn-in test
- 3 month warranty
- Remote ON/OFF control (optional)
- Waterproof level IP68

### Applications

- Industrial
- Alternative Energy
- Golf Cart
- Forklift
- Electromotor
- Telecommunications
- Boat & Yacht
- Medical
- LED Marketplaces and so on.

Model naming method  
RW-997-60-12V-120W

RW-997: SKU NAME  
60V Input voltage  
12V : Output voltage  
120W: Output Power

## Electrical Specifications

Conditions: TA = 25 °C (77°F), Airflow = 1 m/s (200LFM), Vin =60V, Vout =12V, unless otherwise specified

Parameter	Min.	Typ	Max.	Units	Remarks
Absolute maximum ratings					
Operating ambient temperature	-30	-	+50	°C	
Shell ambient temperature	-30	-	80	°C	
Storage temperature	-55	-	100	°C	
Operating humidity	5	-	95	%	Non-condensing
Atmospheric pressure	62	-	106	Kpa	
Altitude	-	-	4000	m	
Cooling way	-	-	-		Natural cooling

## Input characteristics

Input voltage	51	60	75	V	-
Max. input voltage	-	-	78	V	Continuous
Undervoltage shutdown	47	48	49	V	Automatic recovery
Undervoltage recovery	50	51	53	V	Automatic recovery
Max. input current	-	-	4.5	A	Vin =51V; Iout =10A
No load current	-	27	40	mA	Vin =60V

Positive electrode cable	-	16	-	AWG	16.5cm length, Red
Negative electrode cable	-	16	-	AWG	16.5cm length, Black
Enable PIN cable	-	NA	-	AWG	None
Fuse	-	7.5	-	A	Built-in

## Output characteristics

Efficiency	-	94.7	-	%	Vin = 60V; Vout = 10A
Output voltage	12.1	12.2	12.5	V	Vin = 60V; Vout = 10A
Regulator accuracy	-	±2	-	%	
Voltage regulation	-	±2	-	%	
Load Regulation	-	±2	-	%	
Overvoltage protection	13.8	14.3	15	V	Hiccup mode
Output current	0	-	10	A	
Overcurrent protection	10.5	12	14	A	
External capacitance	0	1000	2000	μF	
Output ripple and noise	-	50	100	mVp-p	Vin = 51-75 V; Oscilloscope bandwidth: 20 MHz;
Output voltage rise time	-	95	100	mS	
Boot delay time	-	190	200	mS	
Out voltage overshoot	-	-	5	%	
Over temperature protection	-	-	100	°C	Shell test
Short circuit protection	-	-	-	-	Long-term (4 hours) short circuit is not damaged, Hiccup mode
Positive electrode cable	-	16	-	AWG	16.5cm length, Yellow
Negative electrode cable	-	16	-	AWG	16.5cm length, Black

## Feature Description

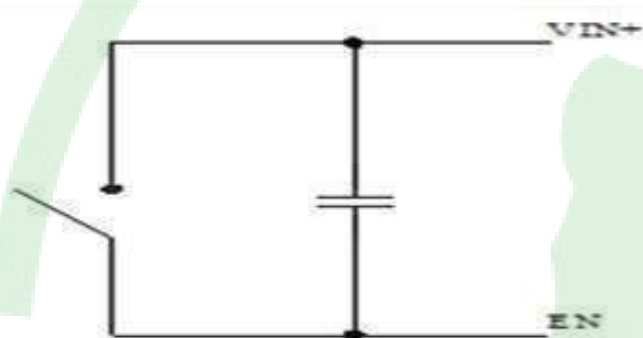
### Remote On/Off (EN) (Optional)

Logic Enable	Low level (0 - 18Vdc)	High level (18-36Vdc)	Left open
Positive logic	Off	On	Off

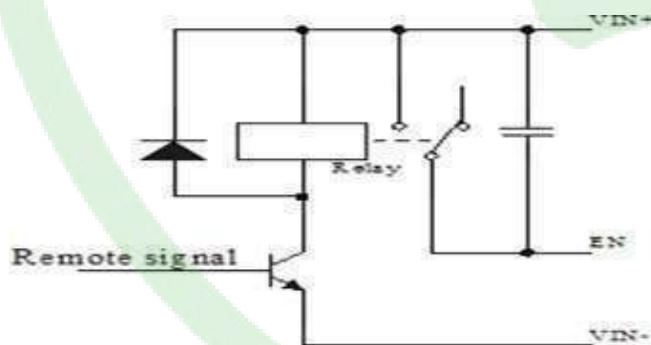
### Input Undervoltage Protection

The converter will shut down after the input voltage drops below the under-voltage protection threshold for shutdown. The converter will start to work again after the input voltage reaches the input under voltage protection threshold for startup. For the Hysteresis, see

### Various circuits for driving the EN



Simple control



Transistor control

### Output Overcurrent Protection

The converter equipped with current limiting circuitry can provide protection from an output overload or short circuit condition. If the output current exceeds the output overcurrent protection set point, the converter enters hiccup mode. When the fault condition is removed, the converter will automatically restart.

### Wiring Instructions

The input and output of this product is terminals. The user should ensure that the input and output wires and terminals are connected reliably, and pay attention to the wire diameter to meet the requirements of the power supply current. If the cable to be used is long, it needs Considering the voltage drop of the wire, if the voltage drop is too large, the voltage output at the load end may not meet the load demand. In this case, consider using a thicker wire diameter or reducing the length of the wire. Generally, if long wiring is required. Long line should be used on the side where the current is relatively small. For example, this product is a step-down product, so long lines should be used on the input side.

## Safety and EMC features

Anti-electric Strength	Input to Output		V	Leakage current $\leq 3.5\text{mA}$ , $I_{\text{min}}$ , no breakdown, no arcing
	Input to Shell	$\geq 500$	V	
	Output to Shell	$\geq 500$	V	
Insulation resistance	Input to Output	None	$M\Omega$	
	Input to Shell			
	Output to Shell			

## Other characteristics

Weight	$\leq 300$	g	
Package	White box		
MTBF	$\geq 200,000$	H	$V_{\text{in}} = 60\text{V}$ ; $I_{\text{out}} = 10\text{A}$
Switching frequency	$100 \pm 30$	KHZ	

## Characteristic Curves

Conditions:  $T_A = 25^\circ\text{C}$  ( $77^\circ\text{F}$ ),  $V_{\text{in}} = 60\text{V}$ ,  $V_{\text{out}} = 12\text{V}$ , unless otherwise specified.

Figure 1, Efficiency

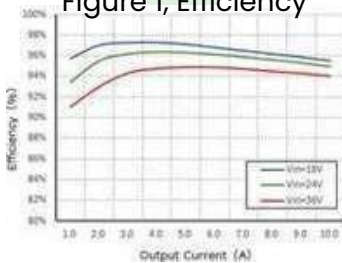


Figure 3,

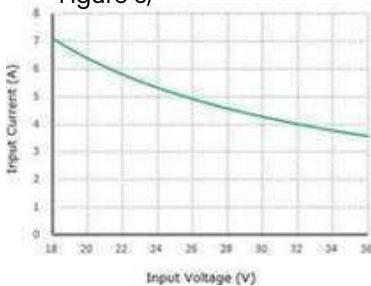
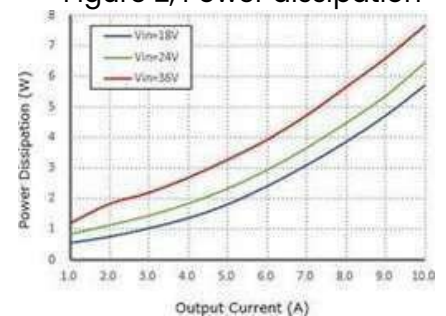


Figure 2, Power dissipation



**Typical Waveforms**

Conditions:  $T_A = 25^\circ\text{C}$  (77°F),  $V_{in} = 72\text{V}$ , unless otherwise specified..

Figure 4, 25% - 50% load dynamic

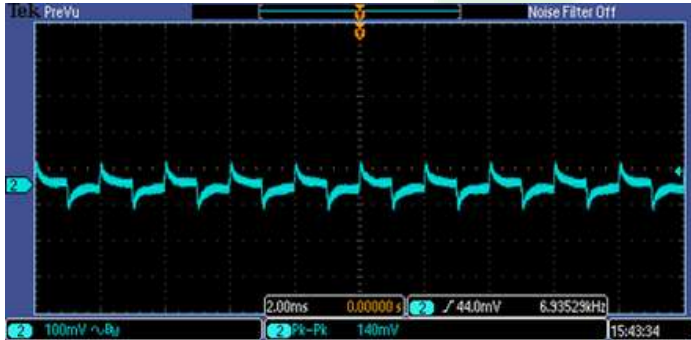


Figure 5, 50% - 75% load dynamic

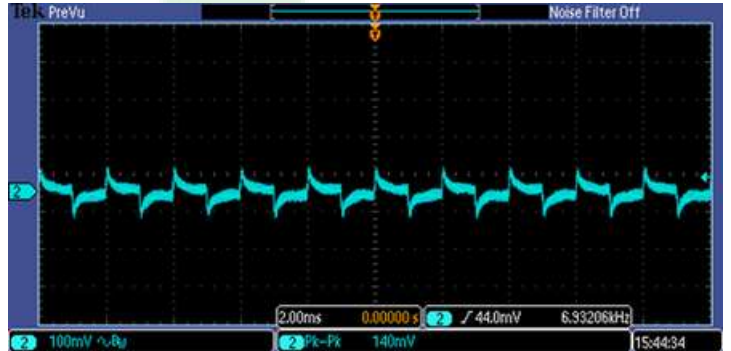
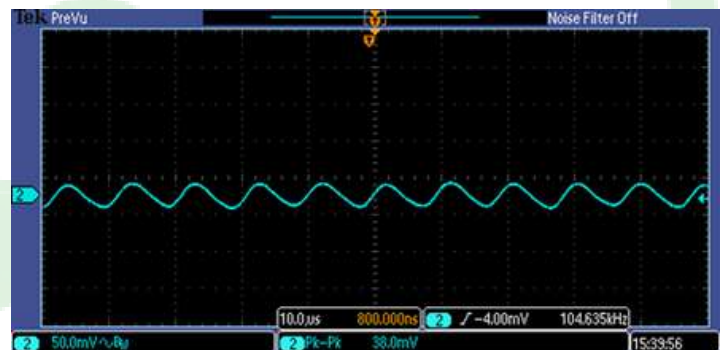


Figure 6, Output voltage established ( $I_{out} = 10\text{A}$ )



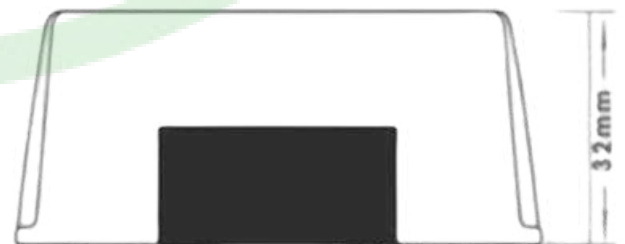
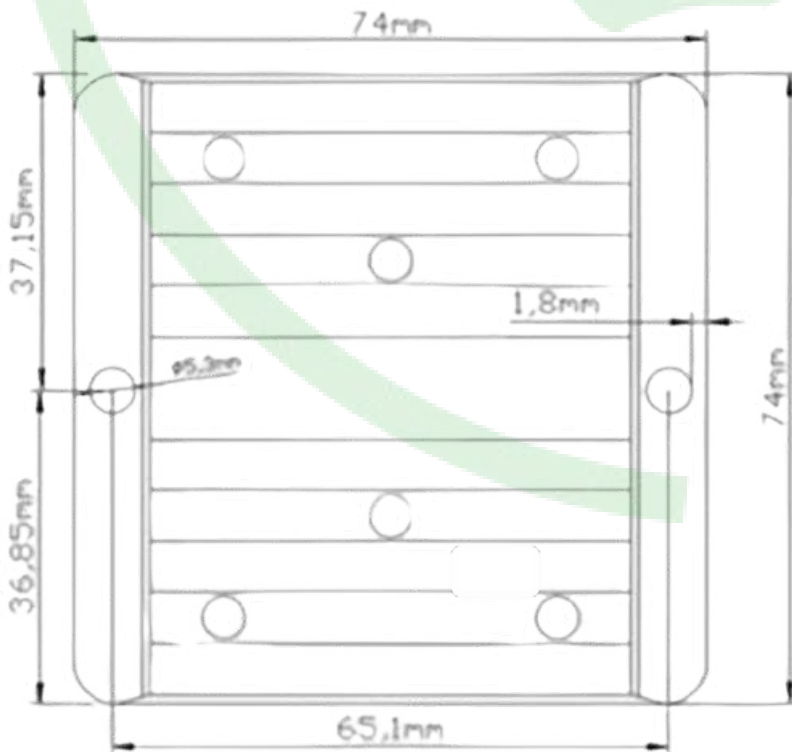
Figure 7, Output ripple & noise ( $I_{out} = 10\text{A}$ )





**Thermal Consideration**

Sufficient airflow should be provided to help ensure reliable operating of the RW-997-60-12V-120W. Therefore, thermal components are mounted on the top surface of the RW-997-60-12V-120W to dissipate heat to the surrounding environment by conduction, convection, and radiation. Proper airflow can be verified by measuring the temperature at the middle of the base plate.



**NEWTECH ENTERPRISES Ltd reserves the ©copyright and right of final interpretation.**